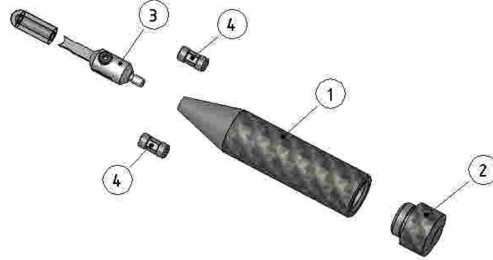
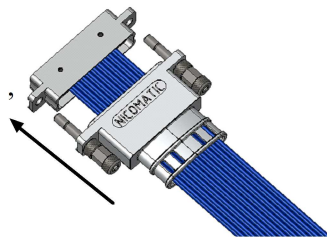


Composition de l'outil C17596,



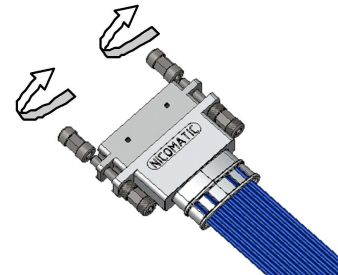
1/ Montage du back-shell sur le connecteur,

Pousser le back-shell en appui sur le connecteur.



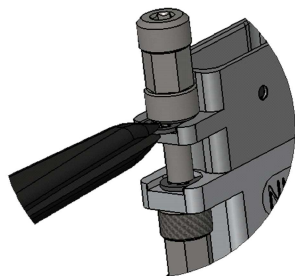
2/ Montage des « vis de pré-montage »,

Visser à la main les 2 « vis de pré-montage » N° 4,



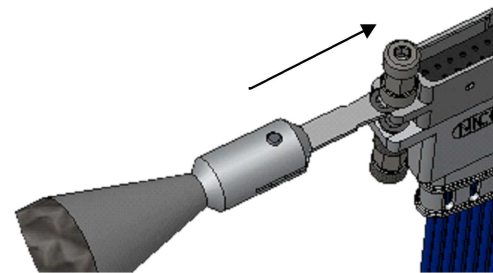
3/ Positionner le clip.

A l'aide d'une pince brucelle positionner le clip entre le connecteur et « la vis de pré-montage »,



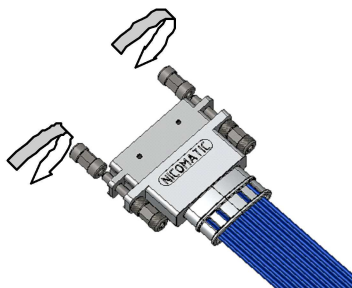
4/ Verrouillage du clip.

Pousser le clip dans son logement : Utiliser l'outil d'insertion des clips C17596,



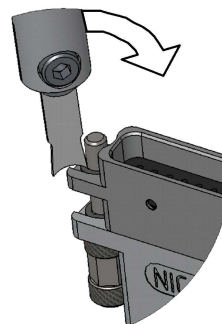
5/ Démontage des « vis de pré-montage »,

Dévisser à la main les 2 « vis de pré-montage » N° 4,



6/ Démontage du back-shell monobloc ,

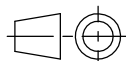
Insérer la pointe de l'outil entre le clip et la vis, faire pivoter l'outil pour extraire le clip,



Attention : une fois le clip extrait il ne doit plus être réutilisé.



173, rue des fougères Tel. : +33 (0)4.50.36.13.85
Z.I. Les Bracots Fax : +33 (0)4.50.36.11.33
F-74890 Bons-en-Chablais Web : www.nicomatic.com



Echelle/Scale

1:1

a	12/07/13	Edition originale	E.M.	A.V.	H.T.
Ind.	Date	Modification	Drawn	Checked	Approved

Folder : X:\Méthodes\Documentations\Instruction catalogues\

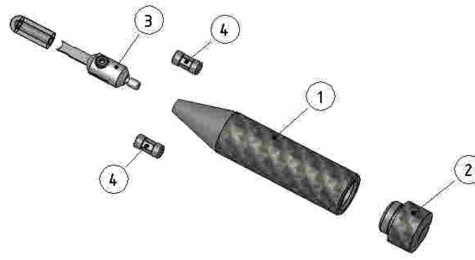
Designation : Instruction de montage et démontage des back-shell monobloc

Ref : ICBS01

Page 1/2

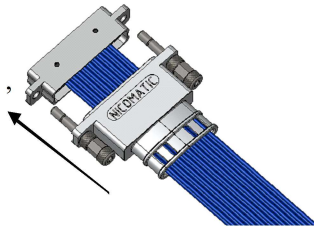
A4

C17596 tool components



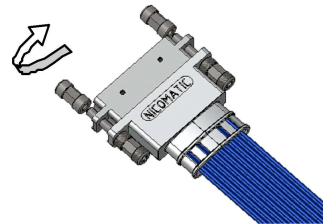
1/ Backshell mount on the connector

Push the backshell while maintaining the connector



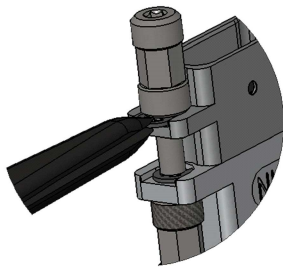
2/ Mounting of pre-mounting screws

Screw by hand the 2 pre-mounting screws N°4



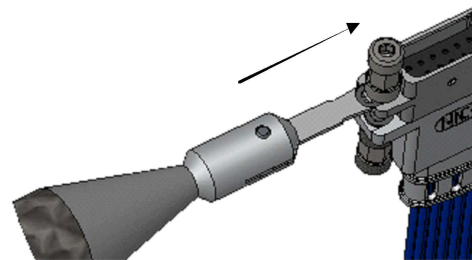
3/ Position the clip

Position the clip with a clamp tweezer
Between the connector and the pre-mounting screw



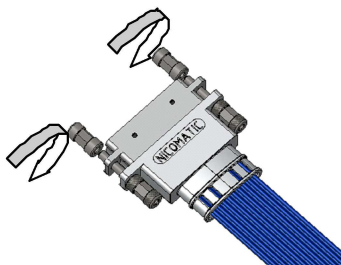
4/ Clip locking

Push the clip in its place by using C17596 tool



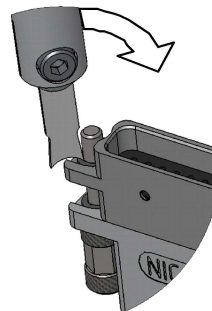
5/ Dismount of the pre-mounting screws

Loosen by hand the 2 pre-mounting screws under N°4



6/ Mono backshell dismount

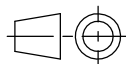
Insert the tool head between the clip and the screw.
Rotate the tool to extract the clip.



Note : once the clip is extracted,
it should not be reused again



173, rue des fougères Tel. : +33 (0)4.50.36.13.85
Z.I. Les Bracots Fax : +33 (0)4.50.36.11.33
F-74890 Bons-en-Chablais Web : www.nicomatic.com



Echelle/Scale

1:1

a	12/07/13	Edition originale	E.M.	A.V.	H.T.
Ind.	Date	Modification	Drawn	Checked	Approved

Folder : X:\Méthodes\Documentations\Instruction catalogues\

Designation : Mounting/Dismounting instructions for
DMM Mono Backshells

Ref : ICBS01

Page
2/2

A4