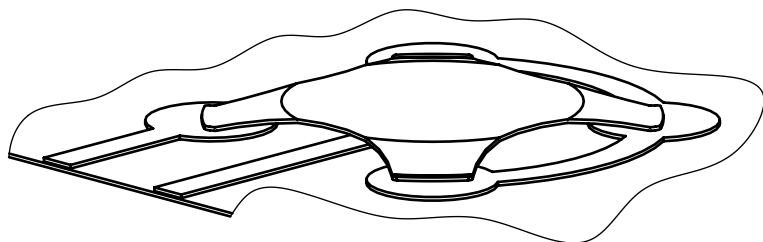
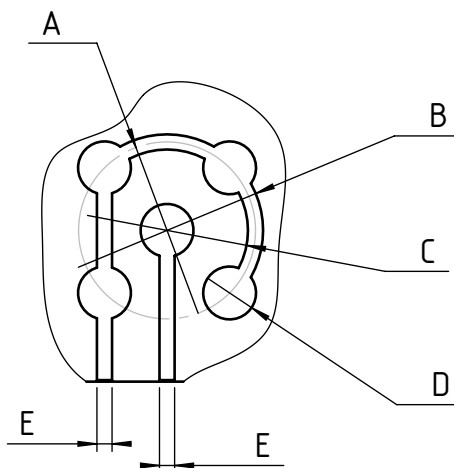


Switch'Air™ Domes 4LEG

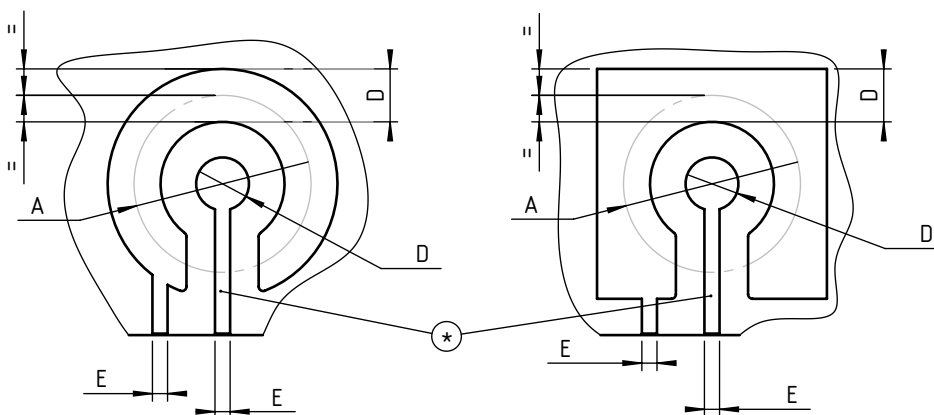
Suggested shape



5:1



Other suggestions



Using a double side PCB, you do not need the central track\* the connection can be made with a through hole.

Recommended plated following domes :

- Dome YY code = 21 (Nickel plated)
- Pattern plated = Tin plated (Sn) or Nickel plated (Ni) or Gold plated (Au) or Silver ink (Ag)
- Dome YY code = 31 (Selective gold plated)
- Pattern plated = Tin plated (Sn) or Nickel plated (Ni) or Gold plated (Au) or Silver ink (Ag)

	A	B	C	D	E
N6	5.4	6	5	2	0.5
N8,4	8	8.5	7.5	2.5	0.5
N10	9.5	10.5	8.5	3	1
N12,2	11.7	12.7	10.7	3.5	1



NICOMATIC

www.nicomatic.com



Scale  
2:1

e	24/04/09	C.G.	E.M.	D.Z.
Ind	Date	Drawn	Checked	Approved

Item : Switch'Air™ Domes pattern for one side PCB

Catalogue Reference :

SP-DOME-001

Compliant matrix :  
Customer reference :

General tolerance

Page 1/1

A4